

EN 1210 - NUVITA Manual Breast Pump

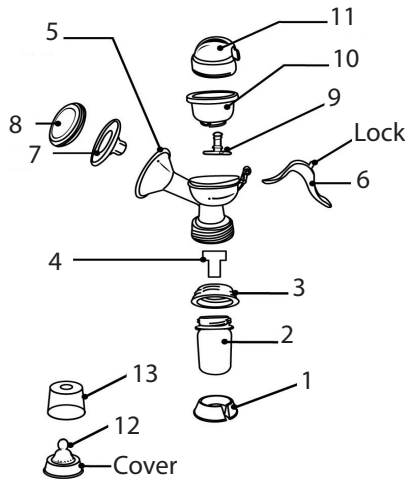
INTRODUCTION

Congratulations to you for feeding your baby with breast milk, which is the best for your baby's health. But maybe sometimes it isn't convenient for your feeding, you can choose our breast pump. It has three remarkable features:

1. Silicon gel sucker stimulates galactophore gently and naturally to produce more milk.
2. It can imitate baby's suction, making feeding mother feel more comfortable.
3. The soft silica-gel pad can massage your breast and avoid pain when expressing milk. The comfortable vacuum extrusion is designed to be just like milking by your hand, making suction healthier and more complete.

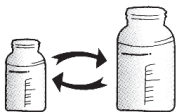
CONTENIDO DEL EMBALAJE

1. Base.
2. Bottle.
3. Bottle converter.
4. Suction valve.
5. Body shelf.
6. Handle.
7. Massage pad.
8. Dustproof lid.
9. Suction adjustable lever.
10. Suction silica gel.
11. Upper cover.
12. Nipple.
13. Bottle cover.



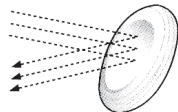
If one or more items are missing or damaged, please refer to your local dealer and request the replacement.

FUNCTION INSTRUCTION



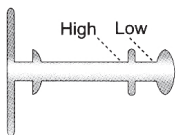
BE SUITABLE FOR ANY BOTTLE

To be changeable between big bottle and small one.



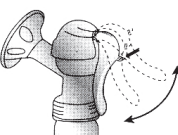
DUSTPROOF LID

Please cover the dustproof lid if no using, to ensure your baby's health.



SUCTION ADJUSTABLE LEVER

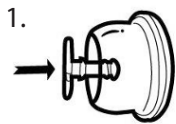
Two different suction, you can choose one for milking.



THE LOCK

Popular design of the lock can save space and be convenient for carrying.

ASSEMBLY STEPS



Install the suction adjustable level.



Put the silica gel into the body, making sure the top fits perfectly and completely.



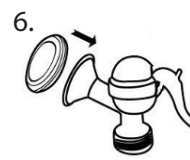
Choose one suction (High or Low) and then install the lock in the body.



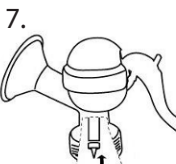
Install the upper cover.



Put the massage pad into the body, making sure the top fits perfectly and completely.



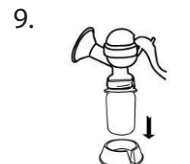
Cover it with dustproof lid.



Install the valve tightly into the bar of the body



Put the bottle in

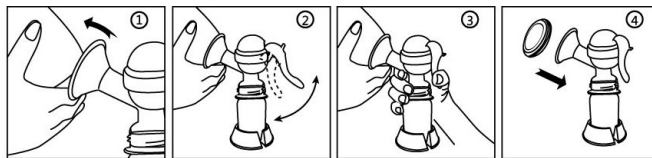


Put the product into the base

USAGE METHOD

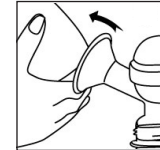
Before using the appliance please wash all components and your hands with warm water and soap.

1. Open the dustproof lid and put the nipple into the silicon gel pad and cover the shield tightly to the breast.
2. Open the lock.
3. Begin extraction slowly and gently. Once you reach the desired intensity and frequency continue until it is out of the breast.
4. When the extraction is completed, cover with dustproof lid.

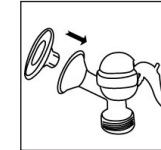


Inside the packaging are provided with the labels for the bottles to indicate the date of extraction of milk.

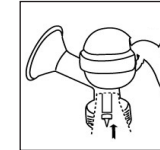
MEASURE FOR SOLVING SUCTION DEFICIENCY



Make sure the breast shield covers breast tightly.



Make sure the silicon gel pad and breast shield are connected tightly.



Make sure the sucking valve is fitting tightly with the sucking pipe.

CLEAN

Please clean the appliance after each use.

Disassemble the device and wash all parts in the dishwasher or with hot water and soap, then rinse thoroughly. Do not use aggressive detergents or detergent, or antibacterial agents. All parts of the device can eventually be sterilized with a steam sterilizer.

WARNING

1. Use only the accessories supplied in the packaging.
2. Make sure the appliance is not exposed to direct sunlight or excessive heat.
3. This appliance is designed and intended for personal use is therefore not advisable to share with others. If you need to use shared with others to ensure that everyone has their own personal kit of elements that come into contact with the body and with milk (silicone cup, bottle etc.).
4. Do not use the device in case of drowsiness or other similar symptoms but postpone the extraction time to a more favorable.
5. Make sure any foreign object is introduced inside the main body, bottle or suction valve.
6. Before to use make sure that the appliance is clean or sterilized.

SERVICE

Every care has been taken in the realization of products, accessories provided in the box and documentation provided, so in case of problems it is advisable to repeat the operations by faithfully following the instructions in the manual.

For further information on the help service visit the website www.my-nuvita.com.

GARANZIA - TERMINI E CONDIZIONI

In accordance with current regulations, the manufacturer provides the consumer with a legal guarantee of 24 months starting from the date stated in the receipt.

Excluded from the legal guarantee of 24 months are the parties identified as "consumable" (e.g., batteries, brush heads or parts subject to wear).

The legal guarantee of 24 months is void if:

1. The product has undergone aesthetic damage due to improper use not in accordance with instructions in the manual.
2. This product has been modified and / or tampered with.
3. The cause of the failure was due to poor maintenance of the individual components and / or accessories and / or supplies (e.g. oxidation and / or scaling due to the retention of water or other liquids, sediment blocking the sensor, leak of corrosive liquid from batteries.)

The following is excluded from the legal guarantee of 24 months:

1. Costs related to replacements and / or repair of parts subject to wear or costs for ordinary maintenance of the product.
2. The costs and risks involved in transporting the product to and from the store where you purchased or otherwise authorized collection centre to receive the products under warranty.
3. Damage caused by or resulting from improper installation or improper use not in accordance with the directions in the instruction manual.

4. Damage due to natural disasters, accidental events or adverse conditions not compatible with the product.
5. Defects that have a negligible effect on product performance.

The following is excluded from the legal guarantee of 24 months:

1. Costs related to replacements and / or repair of parts subject to wear or costs for ordinary maintenance of the product.
2. The costs and risks involved in transporting the product to and from the store where you purchased or otherwise authorized collection centre to receive the products under warranty.
3. Damage caused by or resulting from improper installation or improper use not in accordance with the directions in the instruction manual.
4. Damage due to natural disasters, accidental events or adverse conditions not compatible with the product.
5. Defects that have a negligible effect on product performance.

The manufacturer, distributor and all the parties involved in the sale do not assume any liability for losses and economic damage from any malfunction of the product. In accordance with current regulations the manufacturer, distributor and all the parties involved in the sale are not responding in any case for damages, including direct, indirect ones, loss of net income, loss of savings and additional damage and other details consequences going beyond the damage caused by the breach of warranty, contract, strict liability, wrongdoing or due to other causes, resulting from the use or inability to use the product and / or paper and electronic documents, including the lack of service.

The product complies with overall migration requirements stated in European Commission Directive 2002/72/EC and 2007/19/EC and its amendments relating to plastic materials and articles intended to come into contact with aqueous foodstuff (PH > 4.5) and fatty foodstuff.

The product is compatible with the following norms / standards:

EN-1186-3:2002	Materials in contact with food, Plastics, Packaging materials, Containers, Food manufacturing processes, Food technology, Food testing, Migration (chemical), Contaminants, Contaminant determination (food), Chemical analysis and testing.
EN-1186-2:2002	Materials in contact with food, Plastics, Packaging materials, Containers, Food manufacturing processes, Food technology, Food testing, Olive oil, Vegetable oils, Migration (chemical), Contaminants, Chemical analysis and testing, Contaminant determination (food), Fats.