

Introduction

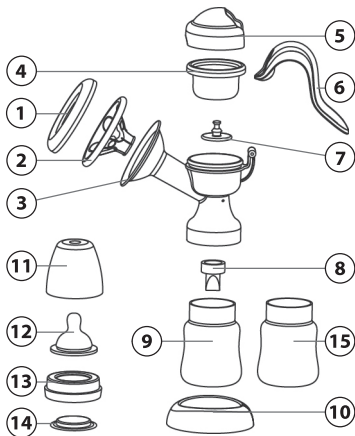
Dear Customer, you bought one of the most advanced breast pumps actually available in the market. We studied this device to be as much user friendly as possible but, I'm afraid, you still have to invest a small amount of time in reading these instructions or you won't get 100% of the benefits this product can bring you. Every mother needs a good breast pump that is perfect for use in different situations. This breast pump will allow to extract your breastmilk comfortably whether you are at home or during travel.

Please store the guide in a safe and dry place for future reference.

Package Content

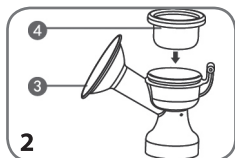
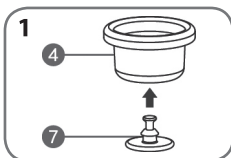
If one or more items are missing or damaged, please refer to the shop where you purchased and request for replacement.

1. Dust-proof cover
2. Silicone Massage cup
3. Breast Pump body including flange
4. Diaphragm suction
5. Breast Pump lid cover
6. Handle
7. 2 Level Piston
8. Suction Valve
9. Complete Feeding Bottle (150ml)
10. Base
11. Dust Proof Cover
12. Teat
13. Ring
14. Sealing Disk
15. Extra bottle body (150 ml) only
16. Velvet Bag (not in diagram)

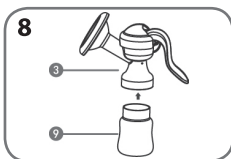
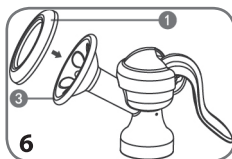
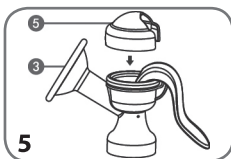
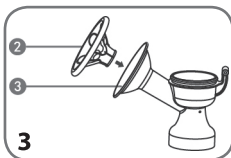


Steps to assemble the breast pump

1. Place the piston firmly inside the diaphragm suction.
2. Place the diaphragm suction inside the breast pump body. Ensure the silicone fluted edge of the suction covers the circular margin. Ensure it fits tightly.



- Place the Silicone massage cup tightly on the flange.
- Attach the handle to the piston.
- Attach the breast pump lid cover firmly fit.
- Cover the flange with the dustproof cover.
- Install the suction valve slowly and tightly
- Screw the bottle tightly with the breast pump body.
- Press the breast pump body with the base for completion.



Using the breast pump

- Wash your hands before using the breast pump.
- Ensure that all the parts are cleaned, dry and assembled properly before any use.
- Relax while on a sitting posture. A better expression effect can be achieved using a thermal gel breast pads or a hot towel before milk extraction. Take a few moments to stimulate (about 60-90 seconds) through massaging the breast followed by rapid soft pumping using the Level 1 of the piston.



the breast with your other hand to ensure no air escapes and to achieve a vacuum status.



This product is designed with a special rotating system. Rotate the handle to a comfortable angle to ease the milk extraction position.



The breastmilk extracted is full of nutritional elements. To keep it fresh, store the milk in an appropriate container – refrigerate or freeze immediately.

- Start the expression mode by shifting to Level 2 of the piston then by pressing the handle with a comfortable grip. Hold

- Separate the bottle from the breast pump body once the expression is finished.

To avoid nipple pain, do not continue pumping if you are not able to express breastmilk. Immediately stop breastmilk expression if you are having pain on your fingers, hand or wrist.

Cleaning the breast pump

Please clean the breast pump after each use.

Disassemble the breast pump and wash all parts in the dishwasher or with hot water and unscented (dish) soap, then rinse thoroughly. We suggest to sterilize them after each use in order to prevent any odour staying in the parts. Odours that stay on the parts after washing discourages the baby from breastfeeding. Do not use aggressive detergents or detergent, or antibacterial agents.

Service

Every care has been taken in the realisation of products, accessories provided in the box and documentation provided, so in case of problems it is advisable to repeat the operations by faithfully following the instructions in the manual.

For further information on the help service visit the website: www.nuivitababy.com



- **Use only the accessories supplied in the packaging.**
- **Make sure the appliance is not exposed to direct sunlight or excessive heat.**
- **This appliance is designed and intended for personal use is therefore not advisable to share with others. If you need to use shared with others to ensure that everyone has their own personal kit of elements that come into contact with the body and with milk (silicone cup, bottle etc.). Always sterilize all the parts.**
- **Do not use the device in case of drowsiness or other similar symptoms but postpone the extraction time to a more favorable.**

WARRANTY - TERMS & CONDITIONS

In accordance with current regulations, the manufacturer provides the consumer with a legal guarantee of 24 months starting from the date stated in the receipt.

Excluded from the legal guarantee of 24 months are the parties identified as "consumable" (e.g., batteries, brush heads or parts subject to wear).

The legal guarantee of 24 months is void if:

1. The product has undergone aesthetic damage due to improper use not in accordance with instructions in the manual.
2. This product has been modified and/or tampered with.
The cause of the failure was due to poor maintenance of the individual components and/or accessories and/or supplies (e.g. oxidation and/or scaling due to the retention of water or other liquids, sediment blocking the sensor, leak of corrosive liquid from batteries.)
3. The cause of the failure was due to poor maintenance of the individual components and/or accessories and/or supplies (e.g. oxidation and/or scaling due to the retention of water or other liquids, sediment blocking the sensor, leak of corrosive liquid from batteries.)

The following is excluded from the legal guarantee of 24 months:

1. Costs related to replacements and / or repair of parts subject to wear or costs for ordinary maintenance of the product.
2. The costs and risks involved in transporting the product to and from the store where you purchased or otherwise authorized collection centre to receive the products under warranty.
3. Damage caused by or resulting from improper installation or improper use not in accordance with the directions in the instruction manual.
4. Damage due to natural disasters, accidental events or adverse conditions not compatible with the product.
5. Defects that have a negligible effect on product performance.

The manufacturer, distributor and all the parties involved in the sale do not assume any liability for losses and economic damage from any malfunction of the product. In accordance with current regulations the manufacturer, distributor and all the parties involved in the sale are not responding in any case for damages, including direct, indirect ones, loss of net income, loss of savings and additional damage and other details consequences going beyond the damage caused by the breach of warranty, contract, strict liability, wrongdoing or due to other causes, resulting from the use or inability to use the product and / or paper and electronic documents, including the lack of service.

The product complies with overall migration requirements stated in European Commission Directive 2002/72/EC and 2007/19/EC and its amendments relating to plastic materials and articles intended to come into contact with aqueous foodstuff (PH>4.5) and fatty foodstuff.

The product is compatible with the following norms/standards:

EN-1186-3:2002

Materials in contact with food, Plastics, Packaging materials, Containers, Food manufacturing processes, Food technology, Food testing, Migration (chemical), Contaminants, Contaminant determination (food), Chemical analysis and testing.

EN-1186-2:2002

Materials in contact with food, Plastics, Packaging materials, Containers, Food manufacturing processes, Food technology, Food testing, Olive oil, Vegetable oils, Migration (chemical), Contaminants, Chemical analysis and testing, Contaminant determination (food), Fats.