

nuvita®
nuvitababy.com

IT Tiralatte Elettrico
ES Sacaleche Eléctrico
EN Electric Breast Pump
FR Tire-Lait Électrique
DE Elektrische Milchpumpe
PT Bomba Eléctrica de Mama
GR Ηλεκτρικό Θήλαστρο

Materno Smart



1287M



1287KD



1288M

IT Manuale di Istruzioni
ES Manual de Instrucciones
EN Instruction Manual
FR Manuel d'Instructions

DE Bedienungsanleitung
PT Manual de instruções
GR Εγχειρίδιο οδηγιών

1287M 1287KD 1288M

1287M
1287KD
1288M

EN Materno Smart

Electric Breast Pump

Dear Customer, you bought one of the most reliable breast pumps actually available in the market. We studied this device to be as much user friendly as possible but, we are afraid, you still have to spend a small amount of time in reading these instructions in order to get 100% of the benefits this product can bring you. Keep this manual for future reference.

Precautions

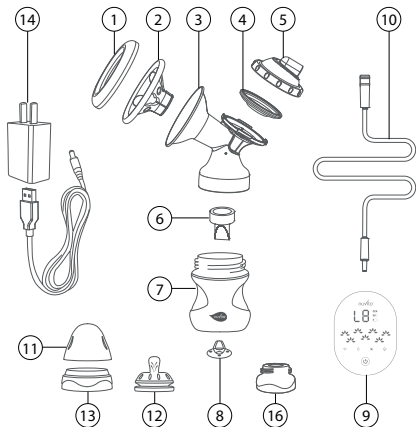
- Please read the instruction manual carefully before using the product.
- This product must be used by adult only with complete attention during the entire process.
- Do not use the power adapter other than the provided.
- Do not warp or knot the connecting tube (*Package Content No. 10*) during the using process.
- Please put the product or dismantled parts out of baby's reach.
- Do not dismount Breast Pump Control Unit (*Package Content No. 9*) in any condition; it shall be repaired or replaced by the manufacturer or professional.

Package Content

Before assembly and use the electric breast pump to make sure that inside the packaging there are the following accessories, refer to your shop in case of any missing parts:

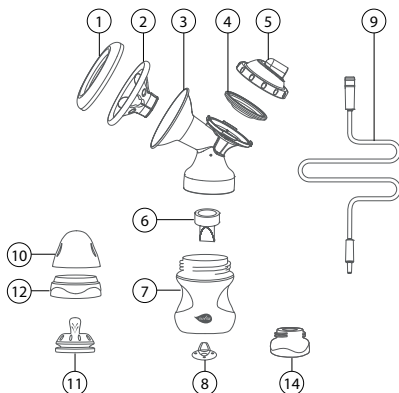
1287M Materno Smart

1. Dust-proof cover
2. Silicone Massage cup
3. Breast Pump Body
4. Anti-spill silicone
5. Anti-spill cover
6. Suction Valve
7. Mimic Baby Bottle (150ml)
8. Mimic Bottle Silicone Valve
9. Breast Pump Control Unit
10. Connection Tube
11. Dust proof feeding bottle cover
12. Bottle Teat
13. Feeding bottle ring
14. Power Adapter
15. Velvet Bag (not shown in the diagram)
16. Adapter



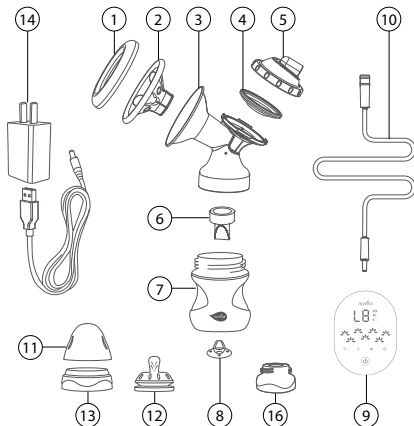
1287KD Materno Smart Kit Doppio

1. Dust-proof cover
2. Silicone Massage cup
3. Breast Pump Body
4. Anti-spill silicone
5. Anti-spill cover
6. Suction Valve
7. Mimic Baby Bottle (150ml)
8. Mimic Bottle Silicone Valve
9. Connection Tube
10. Dust proof feeding bottle cover
11. Bottle Teat
12. Feeding bottle ring
13. Velvet Bag (not shown in the diagram)
14. Adapter



1288M Materno Smart Doppio

1. Dust-proof cover (2x)
2. Silicone Massage cup (2x)
3. Breast Pump Body (2x)
4. Anti-spill silicone (2x)
5. Anti-spill cover (2x)
6. Suction Valve (2x)
7. Mimic Baby Bottle (150ml) (2x)
8. Mimic Bottle Silicone Valve (2x)
9. Breast Pump Control Unit
10. Connection Tube (2x)
11. Dust proof feeding bottle cover (2x)
12. Bottle Teat (2x)
13. Feeding bottle ring (2x)
14. Power Adapter
15. Velvet Bag (not shown in the diagram)
16. Adapter (2x)



Instruction for cleaning

- Before cleaning and sterilization, dismount the parts in contact with the breast or breast milk (apart from Breast Pump Control Unit (*Package Content No. 9*)).
- Do not clean the Breast Pump Control Unit (*Package Content No. 9*) in the water.
- Do not sterilize the Breast Pump Control Unit (*Package Content No. 9*) in the steam sterilizer.
- Do not hot sterilize the connection pipe. Cold sterilization only. Otherwise cleaning with warm soapy water and then rinse with sterile water. (*Package Content No. 10*).
- Clean the parts immediately after each use to avoid the residual milk and bacteria growth.
- Put the cleaned parts on the dry clean towel at the shady and cool place.

Product Features




A rechargeable electric breast pump model for maximizing milk extraction process. It's designed to simulate the suction rhythm of baby.

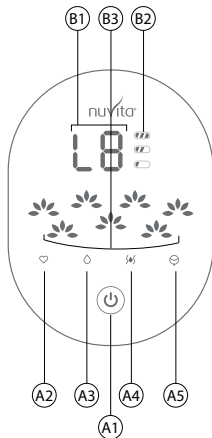
1. This Breast pump uses a 3 Phases Technology:
 - 1st Phase with 9 selectable stimulation levels for 2 minutes operation.
 - 2nd Phase with 9 Selectable levels for your best Expression action.
 - 3rd Phase (selectable on demand) to completely remove of milk from breast to prevent galactostasis.
2. This device is provided with an anti-reflux protection system which prevents the breast milk to return to the control unit and damaging it during the milk extraction process.
3. Your Materno Smart is portable (AC/DC and Rechargeable Battery operated) so suitable for travelling and perfect for breast pumping activity at work.

Description of Pump Control Unit

- | | |
|---|-----------------------|
| A1. On and Off Switch button | B1. Level indicator |
| A2. Stimulation Mode button | B2. Battery indicator |
| A3. Expression Mode button | B3. Rhythm indicator |
| A4. Drainage / Anti-stasis Mode button | |
| A5. Single / Double Mode button
(Light ON - SINGLE pump / Light OFF - DOUBLE pump) | |

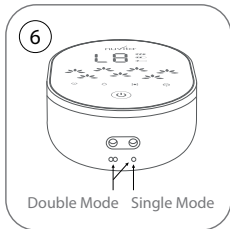
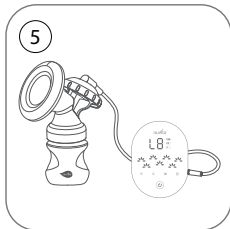
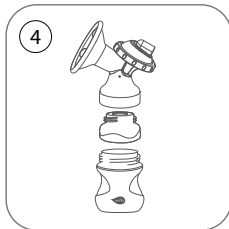
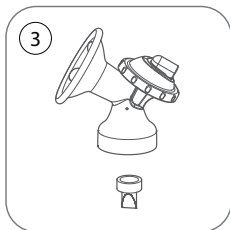
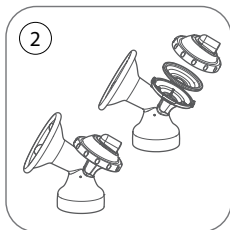
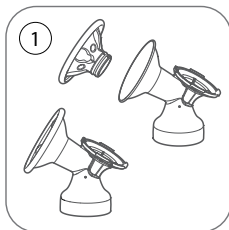
Frequency levels of absorption of Nuvita Materno Smart:

- | | |
|--|---|
|  1 to 9 | This is the Stimulation mode with fast and short suction rhythm. |
|  1 to 9 | This is the Expression mode. This simulates the suction of a baby. The rhythm of this phase is slower, deeper and longer. |
|  1 to 9 | This is the Drainage / Anti-stasis mode. This helps preventing Galactostasis. |



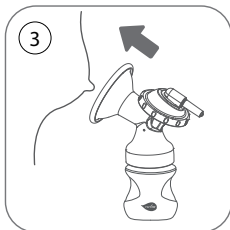
Assembly of the breast pump

1. Insert the silicone massage cup (*Package Content No. 2*) in the breast pump as shown.
2. Fit the anti-spill silicon (*Package Content No. 4*) with the anti-spill cover (*Package Content No. 5*) as shown below. Aim at the sliding slot and screw the anti-spill cover as shown in the figure.
3. Fix the suction valve (*Package Content No. 6*) at the lower end of the breast pump see the figure below.
4. To connect the upper part of the breast pump with the wide neck bottle rotate until it fits close.
5. Insert the connection tube (*Package Content No. 10*) into the interface of the anti-spill upper cover. Insert the other end of the connection tube into the suction slot of the pump. (See picture 6 for suction slot of the pump for *SINGLE* or *DOUBLE* pumping mode).



Using the breast pump

1. Please clean hands before using the product, ensure the parts of the breast pump are cleaned and assembled accurately as per instruction in this guide.
2. Relax and be at ease while having a normal sitting posture. Use a thermal gel breast pad or a hot towel before starting the pumping process.
3. Use your hand to aim the centre of the breast pump at the nipple and ensure it is tight and lock without air getting in and out.





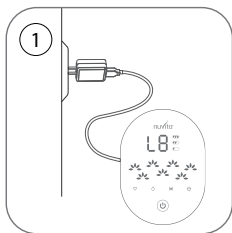
4. Power on, press A1 power button. The screen of the machine will self-test and flicker.
 - Press A2 will enter stimulation mode. The factory default level is level 1. Press A2 again to increase the level of suction intensity. After 2 mins of stimulation, the machine will auto switch to Expression mode. Press A3 again to increase the level of suction intensity. Machine will auto shut off after 30 mins working.
 - Press A3 to enter Expression mode if your milk starts to flow earlier. Press A3 again to increase the level of suction intensity. Machine will auto shut off after 30 mins working.
 - In Expression Mode, Press A2 again to enter stimulation mode again at the same level of suction intensity in previous Stimulation session. After 2 mins of stimulation, the machine will auto switch to expression mode. Machine will auto shut off after 30 mins working.
 - Press A4 to enter Drainage mode when you prefer. Press A4 again to increase the level of suction intensity. Machine will auto shut off after 5 mins.
5. Disassemble, clean and sterilize the non electronic parts for next use.



Installation of AC adaptor

IMPORTANT: Please turn off the machine before connecting with the adaptor.

1. Insert DC round pin of AC power adapter into the DC socket at the Control Unit, and insert the AC power adapter into the power socket as shown in the diagram.
2. When battery is low capacity, only the icon  will flicker, indicating that the machine needs to be charged.
3. When charging, the 3 battery icons on the screen will flicker.
4. When machine full charged, the icon  will be always on.



SERVICE: Every care has been taken in the realisation of products, accessories provided in the box and documentation provided, so in case of problems it is advisable to repeat the operations by faithfully following the instructions in the manual. For further information on the help service visit the website: www.nuvitababy.com

WARRANTY - TERMS & CONDITIONS: In accordance with current regulations, the manufacturer provides the consumer with a legal guarantee of 24 months starting from the date stated in the receipt. Excluded from the legal guarantee of 24 months are the parties identified as "consumable" (e.g., batteries, brush heads or parts subject to wear). The legal guarantee of 24 months is void if: 1). The product has undergone aesthetic damage due to improper use not in accordance with instructions in the manual. 2). This product has been modified and/or tampered with. 3). The cause of the failure was due to poor maintenance of the individual components and/or accessories and/or supplies (e.g. oxidation and/or scaling due to the retention of water or other liquids, sediment blocking the sensor, leak of corrosive liquid from batteries.) The following is excluded from the legal guarantee of 24 months: 1). Costs related to replacements and / or repair of parts subject to wear or costs for ordinary maintenance of the product. 2). The costs and risks involved in transporting the product to and from the store where you purchased or otherwise authorized collection centre to receive the products under warranty. 3). Damage caused by or resulting from improper installation or improper use not in accordance with the directions in the instruction manual. 4). Damage due to natural disasters, accidental events or adverse conditions not compatible with the product. 5). Defects that have a negligible effect on product performance. The manufacturer, distributor and all the parties involved in the sale do not assume any liability for losses and economic damage from any malfunction of the product. In accordance with current regulations the manufacturer, distributor and all the parties involved in the sale are not responding in any case for damages, including direct, indirect ones, loss of net income, loss of savings and additional damage and other details consequences going beyond the damage caused by the breach of warranty, contract, strict liability, wrongdoing or due to other causes, resulting from the use or inability to use the product and / or paper and electronic documents, including the lack of service.



www.nuvitababy.com

Imported/Distributed by
Anteprima Brands International Ltd
1, Ferris Bldg. St.Luke Street PTA1020 Gwardamangia
Malta - Europe