

# MATERNO DUAL Electric Breast Pump

## Introduction

Thank you for choosing the Nuvita 1290 Materno Dual Double Electric Breast Pump. Milking is easier with the Materno Dual allowing mothers such as yourself to give the best natural food for your baby.

## Important Safety Information

- Failure to follow these instructions and safety information can lead to danger when using the pump.
- Unplug the device if it is not being used.
- Do not leave the Materno Dual unattended when plugged into a power source.
- Keep the electrical parts dry and do not immerse in water.
- Do not touch the electrical device if it has fallen into water.
- If not in use, switch it off and unplug it.

## Product Features

- Materno Dual has unrivalled features when compared with other double electric breast pumps in the market.
- It is easy to assemble and the buttons and clear LCD screen makes it convenient to use.
- 2 Phase system: Stimulation and Expression
- 9 Levels Expression for perfect comfortable breast pumping.
- Double-pumping ability: choose from single or double pump
- Silent and comfortable operation in a quiet environment.
- The unique individual pump control applies to either left, right or dual pump. Different expression level can be set on left and right pump/s according to user's needs.
- Closed System with Anti-backflow keeps outside air out of the collection bottle while preserving the purity of your breastmilk.

- WARNING**
- When using the device in the presence of children, please ensure adult supervision.
  - Use the Materno Dual only for its intended use as described in the manual.
  - Do not place the Materno Dual near any appliances producing a strong magnetic field.
  - Do not place the Materno Dual under direct sunlight.

## Preparing the Materno Dual

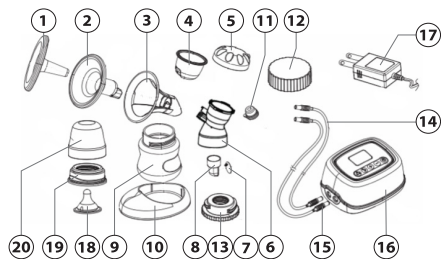
The following parts come in direct contact with breast milk and should be cleaned and sterilised before use:

- Silicone cushions
- bladders
- bottle connectors
- valve membranes
- valve body
- milk bottle
- bottle cap
- bottle adapter.

- WARNING**
- Only use the power adapter supplied with the materno dual. Make sure the power adapter is compatible with the power source.

## Package Content

- |                           |      |                       |      |
|---------------------------|------|-----------------------|------|
| 1. Dust cover             | (x2) |                       |      |
| 2. Silicone cushion       | (x2) |                       |      |
| 3. Plastic brace          | (x2) |                       |      |
| 4. Bladder                | (x2) |                       |      |
| 5. Bladder cap            | (x2) |                       |      |
| 6. Bottle connector       | (x2) |                       |      |
| 7. Valve membrane         | (x2) |                       |      |
| 8. Valve body             | (x2) |                       |      |
| 9. 120ml wide-neck bottle | (x2) |                       |      |
| 10. Bottle stand          | (x2) |                       |      |
| 11. Cap plug              | (x2) |                       |      |
| 12. Bottle cap            | (x2) |                       |      |
| 13. Bottle adapter        | (x2) | 16. Pump unit         | (x1) |
| 14. Tubing                | (x2) | 17. AC/DC adapter     | (x1) |
| 15. Tubing connector      | (x4) | 18. Nipple            | (x2) |
|                           |      | 19. Disc collar       | (x2) |
|                           |      | 20. Nipple dust cover | (x2) |
|                           |      | 21. Breast pump bag   | (x1) |



## Assembly of the breast pump

1. Assembling of cushion and bottle connector – Put the silicone cushion into the plastic brace, slowly and tightly cast into the bottle connector.
  2. Assembling of bladder – Put the bladder into bottle connector, cover with bladder cap to spin it tightly, then connect to tubing connector, avoid air leak.
  3. Assembling of valve membrane – Press the valve membrane into the hole of valve body. The valve membrane should be pressed flat and tight to avoid air leak. Tightly connect the valve membrane with the valve body into the bottle connector.
- Assembling of bottle and bottle stand – Connect the bottle to the bottle connector then put on to the bottle stand.
4. the bottle to the bottle connector then put on to the bottle stand.

## Stimulation and Expression

Place the breast shield on your breast to properly centre the nipple in the funnel.

1. Connect the main pump motor to the power source, press the On/Off Button to switch on. The 30-minutes timer will start and the pump will begin with the Stimulation Phase at Level 1 on both left and right breasts simultaneously. This step will continue for two minutes before entering the expression phase at Level 3 which is a factory default.
2. If your milk starts to flow earlier, press the Phase button to toggle between Stimulation and Expression Phase.
3. Make sure the milk is flowing into the bottle properly.
4. Press the Phase button, which will allow you to toggle between Stimulation and Expression Phase.
5. Adjustment of expression strength level in every phase of the vacuum is possible. Comfort vacuum: Use the + button to increase the vacuum until it is slightly unpleasant. Then press – button to reduce minimally.
6. Press the Function Button to select whether to operate Left, Right or Dual mode.
7. In Expression Phase, adjust individually the desired vacuum level at both left and right. While the pump is operating using the Left pump, press + or – button to set the desired vacuum level for the left. The same applies to the Right pump. If you press the function button again the pump will be in Dual mode with the respective vacuum level at left and right.

## Storing and Thawing Breast Milk

You should store and thaw your breast milk correctly. This is the only way to reserve all the important nutrients and minimize bacterial contamination. Nuvita Baby recommends using the following guidelines for storing and thawing breast milk for healthy term babies.

### Tips for freezing and thawing breast milk

1. Never fill bottles and bags more than full to allow space for possible expansion.
2. Label the bottle and bag with the date you expressed the milk.
3. Store it in the lower back area of the refrigerator, where the temperature is the coolest.
4. Thaw frozen breast milk in the refrigerator overnight or hold the bottle or bag under warm running water at 37 degrees. Be careful not to burn yourself.
5. Shake the bottle or bag gently to blend any fat that has separated.
6. Do not thaw frozen breast milk in a microwave oven.
7. Defrost breastmilk at max 37 degrees Celsius until to loose nutrients.

## Cleaning

Before using your Materno Dual electric breastpump, disassemble, wash and sterilize all parts. Do not sterilize tubing or tubing adapter. Air-dry or towel-dry before reassembly for next use.

Partially dry parts may affect the operation of the Materno Dual. Please ensure that all parts are dry before use.

### Before Each Use

1. Wash your hands thoroughly with soap and warm water before handling the Materno Dual, the pump unit or any other attachments.
2. Ensure the tubing is free from any liquid. Do not use the Materno Dual if any liquid is visible in the tubing.

### Tubing Cleaning

1. Wipe the outside tubing with a clean, damp cloth. Avoid getting water or other fluids inside the tubing.
2. If liquids are inside the tubing, rinse the tubing with clean hot water. Hang to AIR-DRY BEFORE USING. Do NOT insert any object into tubing.

### General Cleaning

1. Set aside the tubing and tubing connector. Under the normal working conditions of the pump, the diaphragm would prevent the backflow of milk. There is no need to wash these parts. In case of finding any liquid vapor inside the tubing, follow the tubing cleaning instruction carefully before use.
2. All parts of the Materno Dual may be cleaned in the upper compartment of your dishwasher or hand washed with dish soap in hot water.
3. Do not use solvents or abrasives.
4. Rinse with hot, clean water.
5. To clean the Materno Dual base, wipe the base with a damp cloth using only water or water mixed with a mild soap.



**NOTE**

**Before each use, visually inspect the individual parts for cracks, chips, tears, discoloration, or weakening as they may affect the efficiency of the Materno Dual breast pump. If damage is obvious, please stop using. Replace parts immediately.**

## Troubleshooting

You should store and thaw your breast milk correctly. This is the only way to reserve all the important nutrients and minimize bacterial contamination. Nuvita Baby recommends using the following guidelines for storing and thawing breast milk for healthy term babies.

### There is low or no suction

1. Check all connections if they are all properly attached at all connection points.
2. Check the valve membrane if it is securely fit and flat on the valve body.
3. Hold the breast shield, not the connector or bottle, while expressing.
4. Ensure the breast shield forms a seal around the breast.
5. There should not be any water in the tubing.
6. All parts must be dry.

### The pump becomes wet

1. Unplug the mains adapter from the socket.
2. Switch off the pump
3. Do not place the pump upside down. Control panel must point upwards.
4. Store the pump in a cool dry warm place for 24 hours.

### The pump does not switch on

1. Check if the power chord is properly attached to the pump
2. Check if the wall socket outlet is turned on
3. Contact your dealer or the store where you bought the pump

## Service

Every care has been taken in the realisation of products, accessories provided in the box and documentation provided, so in case of problems it is advisable to repeat the operations by faithfully following the instructions in the manual.

For further information on the help service visit the website: [www.nuvitababy.com](http://www.nuvitababy.com)

## WARRANTY - TERMS & CONDITIONS

In accordance with current regulations, the manufacturer provides the consumer with a legal guarantee of 24 months starting from the date stated in the receipt.

Excluded from the legal guarantee of 24 months are the parties identified as "consumable" (e.g. batteries, brush heads or parts subject to wear).

The legal guarantee of 24 months is void if:

1. The product has undergone aesthetic damage due to improper use not in accordance with instructions in the manual.
2. This product has been modified and/or tampered with.
3. The cause of the failure was due to poor maintenance of the individual components and/or accessories and/or supplies (e.g. oxidation and/or scaling due to the retention of water or other liquids, sediment blocking the sensor, leak of corrosive liquid from batteries.)

The following is excluded from the legal guarantee of 24 months:

1. Costs related to replacements and / or repair of parts subject to wear or costs for ordinary maintenance of the product.
2. The costs and risks involved in transporting the product to and from the store where you purchased or otherwise authorized collection centre to receive the products under warranty.
3. Damage caused by or resulting from improper installation or improper use not in accordance with the directions in the instruction manual.
4. Damage due to natural disasters, accidental events or adverse conditions not compatible with the product.
5. Defects that have a negligible effect on product performance.

The manufacturer, distributor and all the parties involved in the sale do not assume any liability for losses and economic damage from any malfunction of the product. In accordance with current regulations the manufacturer, distributor and all the parties involved in the sale are not responding in any case for damages, including direct, indirect ones, loss of net income, loss of savings and additional damage and other details consequences going beyond the damage caused by the breach of warranty, contract, strict liability, wrongdoing or due to other causes, resulting from the use or inability to use the product and / or paper and electronic documents, including the lack of service.